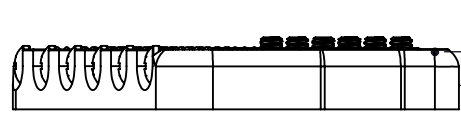


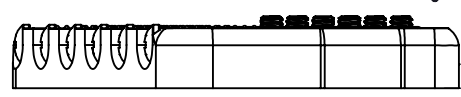
0.290  
INTONATION RANGE

.178  
MOUNTING HOLE  
DIAMETER  
(USE 5/65" PILOT DRILL)

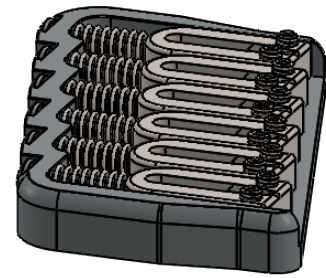
.156  
STRING THRU HOLE  
DIAMETER  
(USE 5/32" DRILL)



0.30  
MIN STRING HEIGHT  
(BOTTOM OF STRING  
TO FACE OF GUITAR)



0.47  
MAX STRING HEIGHT  
(BOTTOM OF STRING  
TO FACE OF GUITAR)



0.125  
FLOOR HEIGHT

WEIGHT (WITH MOUNTING HARDWARE): 4.8oz

THIS DRAWING IS THE SOLE PROPERTY OF HIPSHOT PRODUCTS, INC.  
ALL RIGHTS ARE RESERVED.  
DIMENSIONS AND PRODUCT FEATURES ARE SUBJECT TO CHANGE  
WITHOUT NOTICE.

UNLESS OTHERWISE SPECIFIED:  
DIMENSIONS ARE IN INCHES  
TOLERANCE: ± .005

IMAGE NOT DRAWN  
TO SCALE



8248 STATE ROUTE 96  
Interlaken, NY 14847 U.S.A.  
TEL: 607-532-9404 FAX: 607-532-9530  
E-MAIL: info@HipshotProducts.com

6 STG. MS FIXED BRIDGE 18° .125"