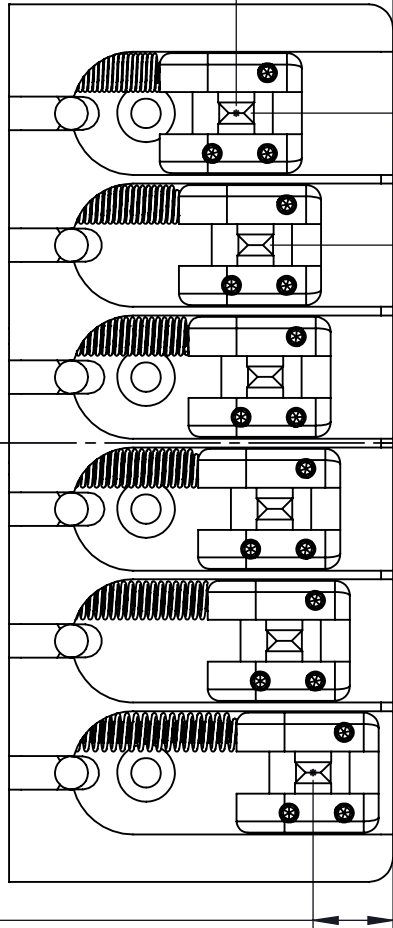


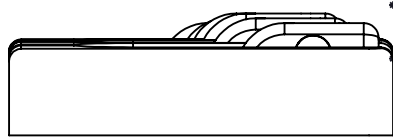
0.82in [21mm]
(MAX INTONATION)



0.42in [11mm]
(MIN INTONATION)

0.687in [17.4mm]
±.062in [1.5mm]
(STRING SPACING)

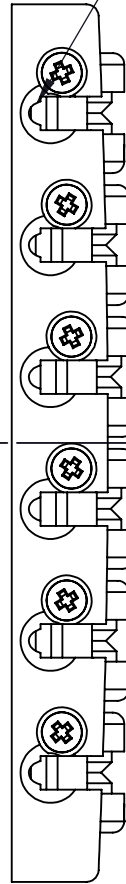
0.68in [17mm]
(MAX STRING HEIGHT)



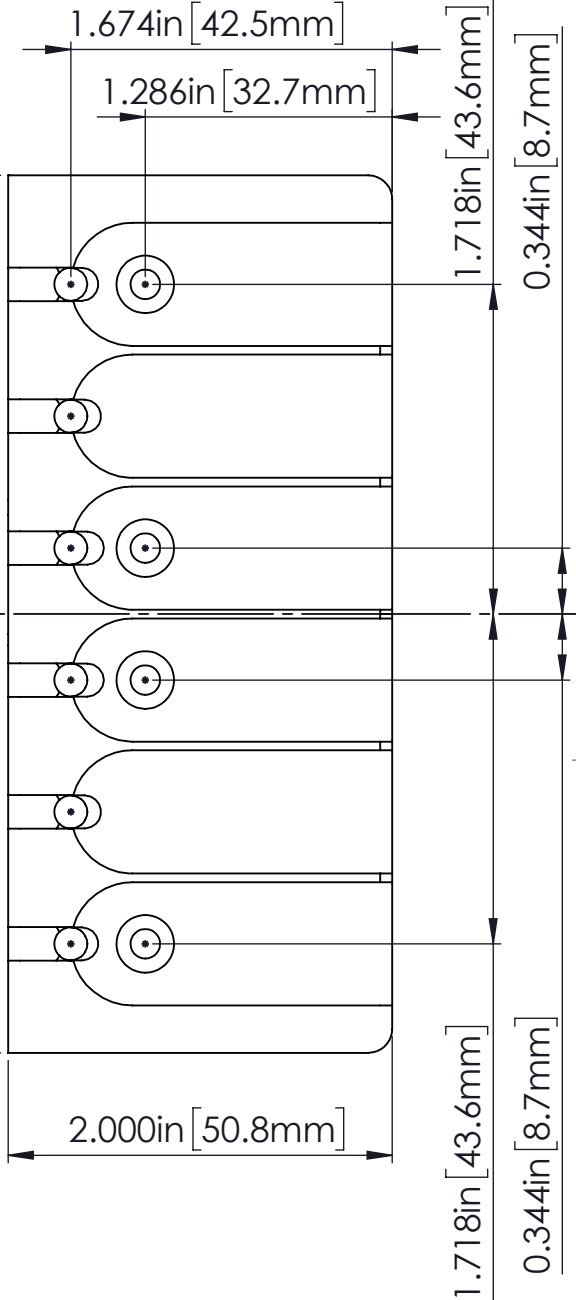
0.40in [10mm]
(MIN STRING HEIGHT)

WEIGHT (WITH MOUNTING HARDWARE):
ALUM: 6.6oz [187g] **BRASS:** 12.6oz [357g]

QUICK RELEASE
CHANNELS

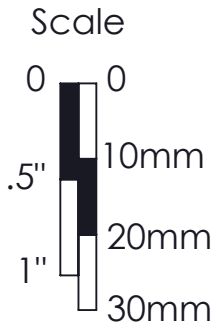


4.570in [116.1mm]



2.000in [50.8mm]

1.718in [43.6mm]
0.344in [8.7mm]



THIS DRAWING IS THE SOLE PROPERTY OF HIPSHOT PRODUCTS, INC. ALL RIGHTS ARE RESERVED. DIMENSIONS AND PRODUCT FEATURES MAY CHANGE WITHOUT NOTICE.

UNLESS OTHERWISE SPECIFIED; DIMENSIONS ARE IN INCHES TOLERANCE: ± .005

REV DATE:
4/18/2021

5A600-687 6 STG A STYLE
BASS BRIDGE .687 SPACING
DIMENSIONS



8248 STATE ROUTE 96
Interlaken, NY 14847 U.S.A.
TEL: 607-532-9404 FAX: 607-532-9530
E-MAIL: info@HipshotProducts.com