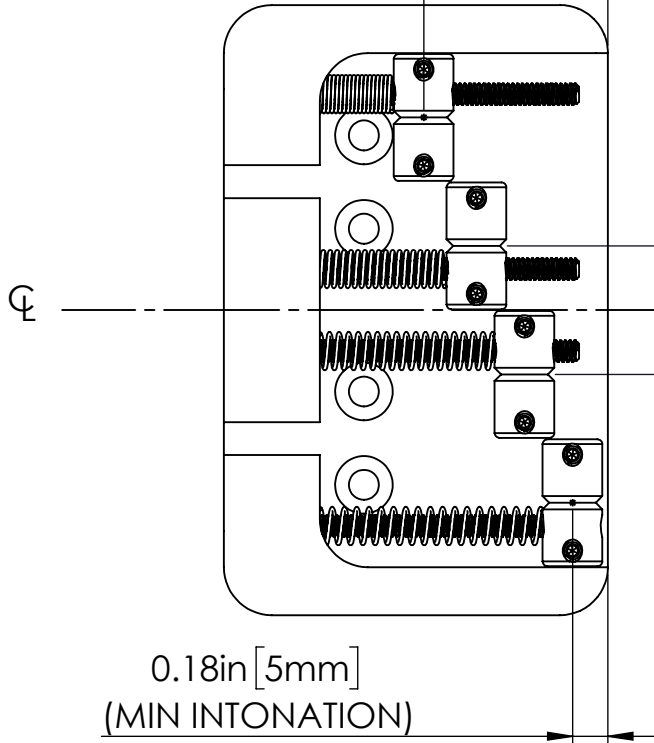


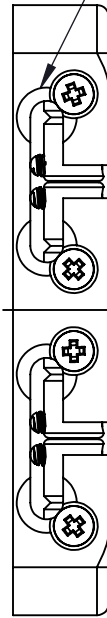
0.96in [24mm]
(MAX INTONATION)



0.18in [5mm]
(MIN INTONATION)

DISCONTINUED IN 2022

0.669in [17.0mm]
(STRING SPACING)

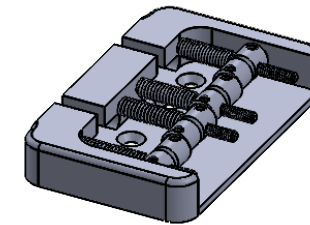


R0.250in [6.4mm]

QUICK RELEASE CHANNELS

3.178in [80.7mm]

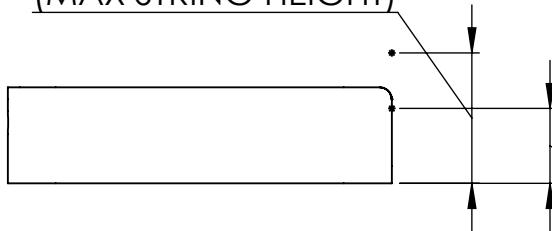
2.000in [50.8mm]
1.271in [32.3mm]



0.910in [23.1mm]
0.424in [10.8mm]

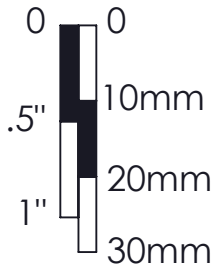
0.910in [23.1mm]
0.424in [10.8mm]

0.68in [17mm]
(MAX STRING HEIGHT)



0.39in [10mm]
(MIN STRING HEIGHT)

Scale



WEIGHT (WITH MOUNTING HARDWARE):
ALUM: 3.7oz [105g] **BRASS:** 7.3oz [207g]

THIS DRAWING IS THE SOLE PROPERTY OF HIPSHOT PRODUCTS, INC. ALL RIGHTS ARE RESERVED. DIMENSIONS AND PRODUCT FEATURES MAY CHANGE WITHOUT NOTICE.

UNLESS OTHERWISE SPECIFIED: DIMENSIONS ARE IN INCHES TOLERANCE: ± .005

REV DATE: 12/1/2021

5B400-669 4 STG B STYLE BASS BRIDGE .669 SPACING DIMENSIONS



8248 STATE ROUTE 96
Interlaken, NY 14847 U.S.A.
TEL: 607-532-9404 FAX: 607-532-9530
E-MAIL: info@hipshotproducts.com