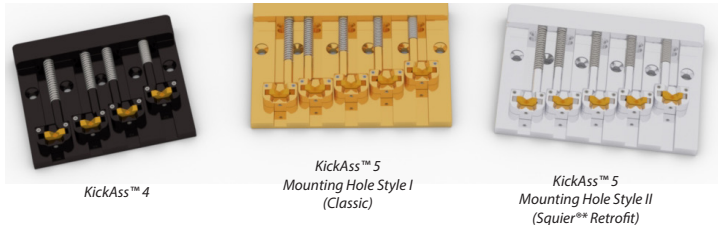


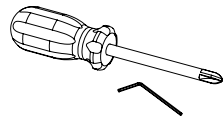
The New Tradition Starts Here



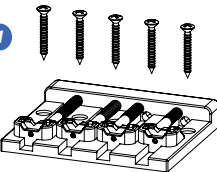
Thank you for choosing the **Hipshot® KickAss™** for your bass. Designed with unprecedented adjustability and customization of tone, it will bring new dimensions to your playing.

Required Tools:

- #2 phillips screwdriver
- .050" hex key (supplied)



1

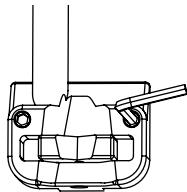


Install the bridge on your bass using the supplied screws.

Note: Please compare your bass to the dimensional drawings at www.HipshotProducts.com to check for proper fit before installing.

2

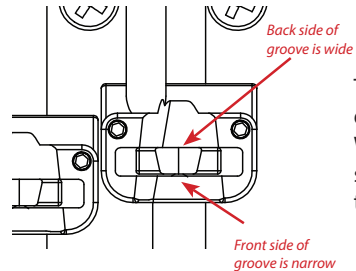
String up your bass and then adjust your string height by turning the height adjust screws. Be sure to adjust both screws the same amount.



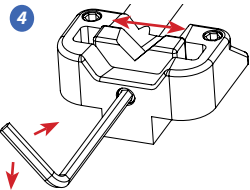
3



There are 3 different inserts included with the KickAss™. Low inserts have red spots and are installed on the 3rd & 4th strings. Med inserts have blue spots and are installed on the 1st & 2nd. Tall inserts are also included to give greater range of height adjustment.

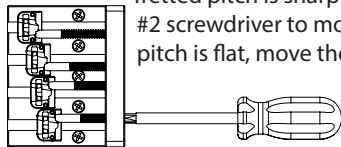


The insert groove has a slight downward angle for string relief. When installed correctly, the saddle groove should flare out in the back (as shown).



4 To adjust your string spacing, loosen the small screw on the front of your saddle and slide the insert left or right. Once your desired position is reached, lock the insert in place by tightening the screw with medium pressure (don't over-tighten).

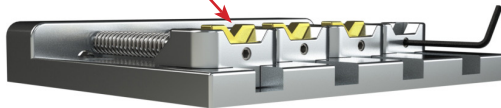
5 Check your intonation on each string by ensuring the pitch at the 12th fret is exactly one octave above the open string pitch. Be careful not to bend the string to raise the pitch when fretting. If the fretted pitch is sharp compared to the open pitch, use the #2 screwdriver to move the saddle backward. If the fretted pitch is flat, move the saddle forward.



Note: Shorter intonation screws are supplied to increase the range of intonation.

Sculpt your own tone with KickAss™ replacement inserts!

Your KickAss™ comes with brass inserts which promote the fundamental tone and lead to a darker, mellower sound.



If you prefer a brighter tone, check out stainless steel inserts. They promote harmonic overtones resulting in loads of brightness.
(Available at your dealer)

Or make your own inserts from wood, plastic, bone or whatever!

